

# Specification of Web Services

Sudhir Agarwal and Anupriya Ankolekar

Institute of Applied Informatics and Formal Description Methods (AIFB),  
University of Karlsruhe (TH), Germany

Transparency of business processes is critical for cooperation

## Needs

semantic constraints  
temporal aspects  
access control policies  
consider non-web processes

## Current Approaches

can't model relations b/w inputs and outputs  
differentiate b/w outputs and effects  
mostly miss / no semantics of ACPs  
don't support

## Our Approach

Combination of Pi-Calculus and DLs  
formal semantics for temporal aspects  
variables to model relations  
b/w inputs and outputs  
access control policies as pre-conditions

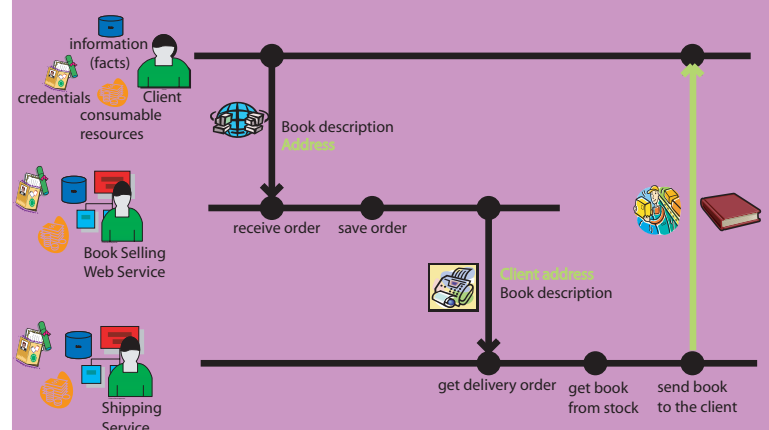
## Features

Unified specification of outputs and effects  
Channel = (protocol, address, message type)  
can model non-web processes as well  
captures correct semantics of comm.  
Interoperable credential based  
access control

## Syntax

$A := 0$	null
$I(v_1, \dots, v_j)$	input activity
$\bar{I}o_1, \dots, o_k$	output activity
$[c]P, Q$	if-then-else
$W := A_1 \parallel \dots \parallel A_n$	composition

## Example



# Automatic Matchmaking of Web Services

Sudhir Agarwal and Anupriya Ankolekar

Institute of Applied Informatics and Formal Description Methods (AIFB),  
University of Karlsruhe (TH), Germany

does invoking the web service  
lead to desired outputs?

want some reading  
material via  
surface mail



$Book \subseteq ReadingMaterial$

do inputs and outputs  
relate as desired?

reading material should  
be sent to the address  
provided as input



$CityAdmn.Re c. \subseteq Gov Re c$

does the web service  
accept desired inputs?

want to pay  
with Visa



$VisaCard \subseteq CreditCard$

do the involved agents  
have desired credentials?

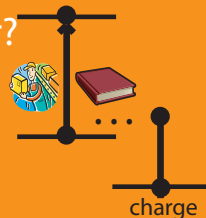
book shipping service  
should be gov. rec.



$CityAdmn.Re c. \subseteq Gov Re c$

do certain activities  
happen in desired order?

is the Visa card charged  
after the reading material  
has been delivered?



charge

do certain activities  
have desired ACPs?

charging service should  
be accessible to only  
Visa business partners



charge  
error

expressive request specification formalism

## Matchmaking Algorithm

Given a request  $R$  and a web service description  $W$

calculate  $V(R)$ , the set of variables in  $R$

calculate  $V(W)$ , the set of variables in  $W$

from  $V(R)$  and  $V(W)$  calculate the substitution functions  $\sigma_1, \dots, \sigma_n$

For each  $i$  in  $\{1, \dots, n\}$

generate  $W_i$  from  $W$  and  $\sigma_i$  by  $\alpha$ -conversion

eliminate condition expressions from  $W_i \rightarrow W_{i,1}, \dots, W_{i,2^{k+1}} \quad C_{i,1}, \dots, C_{i,2^{k+1}}$

For each  $j$  in  $\{1, \dots, 2^{k+1}\}$

If the structures of  $R$  and  $W_{i,j}$  are same and

every input type of  $R$  is sub concept of corr. input type of  $W_{i,j}$  and

every output rule of  $R$  subsumes corr. output rule of  $W_{i,j}$  and

every condition in  $R$  is subsumed by the corr. condition of  $W_{i,j}$

then  $W$  is a match for  $R$  with conditions  $C_{i,j}$